

polytec

COMPACT laminate



ISSUE: 01f

polytec offer an express sample service.

Visit www.polytec.com.au to order your free sample.

polytec

www.polytec.com.au

p 1300 300 547

Create your look



COMPACT laminate

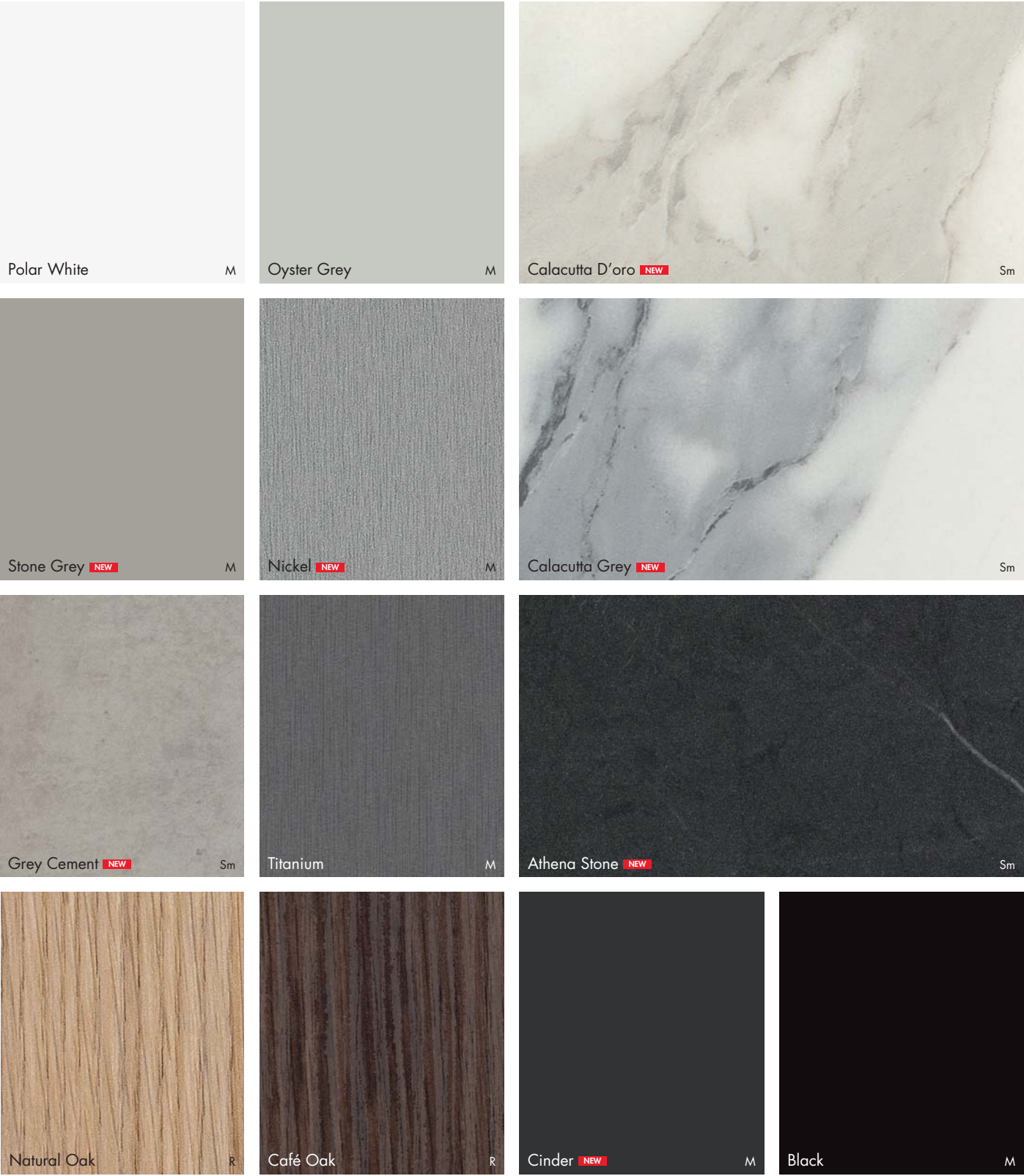
As the consummate, long-lasting, low-maintenance, decorative panel, **polytec's COMPACT** laminate is a go-to product for the most demanding professional interior and external joinery environments.

Being manufactured from quality materials embeds **polytec's COMPACT** laminate with excellent technical characteristics. It's totally impervious to water and has outstanding impact, stain and wear resistance, along with excellent hygienic properties.

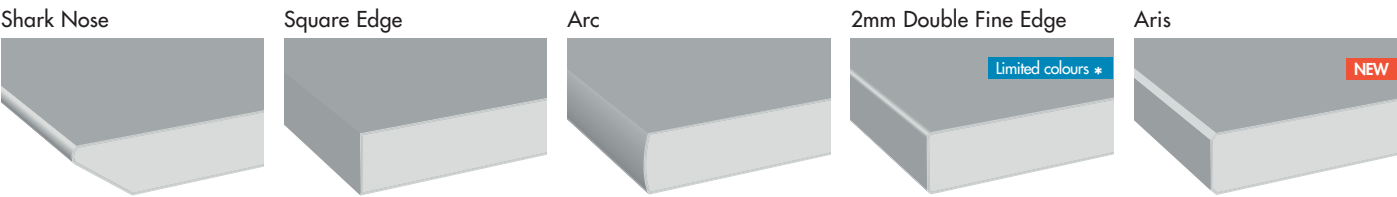
Characterised by a distinctive black core, **COMPACT** laminate holds extra appeal on the aesthetic front and as a structurally sound material.

The introduction of three new embossed timber **RAVINE** colours into **polytec's COMPACT** laminate range avails exciting new design possibilities for commercial projects.

COMPACT laminate colour range



Available profiles in table top & cut to size



* 2mm Double Fine Edge available in limited colours, refer to Availability Guide.



Panels in COMPACT laminate Natural Oak Ravine.

Lockers in **COMPACT** laminate Polar White Matt.

GREEN



polytec is committed to an eco-friendly and sustainable environment. It is an intrinsic part of the way we do business daily. Our decisions are made so that they have minimum negative impact on the environment.

Our product is manufactured from managed and renewable plantation pine, and on request can be purchased as Australian Forestry Standard chain of custody certified. All **polytec** board products are manufactured from E0 or E1 MDF.

We manage waste responsibly through numerous recycling programs including aluminium and metals, used oils and timber waste is recycled back into energy. We subscribe to local government environmental initiatives and voluntary audits as well as our own internal Energy and Carbon Management Policy (ECM), which aligns with the Australian Government’s Energy Efficiency Opportunities (EEO) program.

polytec doors and benchtops are Australian Made & Owned.

CARE

The surface of **polytec**’s **COMPACT** laminate is made from a stain-resistant melamine based resin. The toughness and high impermeability of this surface means that **polytec**’s **COMPACT** laminate should require no more than wiping with a soft cloth, dampened with plain water or a household detergent mix to remove all common household spills.

For more stubborn stains use a mild household cleaning spray. Always ensure you refer to the recommendations provided by the manufacturer of the cleaning product before use.

By following these simple steps you should retain a beautiful surface for many years.

OUTSIDE COVER: Partitions in **COMPACT** laminate Natural Oak Ravine.

INSIDE COVER: Table tops in **COMPACT** laminate Natural Oak Ravine.
Ceiling slots in **RAVINE** Natural Oak.

Visit www.polytec.com.au for specific care and cleaning information. Darker colours will show superficial wear and tear more readily than lighter coloured surfaces and require more care and maintenance.

The colours and details shown in this brochure are to the highest standards in printing. However, they should only be used as an indication of actual product colour. To order your free colour sample visit www.polytec.com.au. **polytec** swatches and samples represent a small area of the overall colour structure, to view the large colour sample, visit www.polytec.com.au. The use of our current colour samples gives the colour and finish that a customer would expect to receive. **polytec** does not guarantee exact colour matches across product ranges due to colour variation in each product group.