

Folding and sliding hardware systems

# Sliding shutters



# Welcome

## About Hawa AG

Pivoting, sliding and folding architectural hardware has been at the centre of our world ever since 1965, together with the fascinating applications they open up for our customers. This has gained us international repute and recognition in our specific business areas of architectural hardware for glass/metal, architectural hardware for wood, architectural hardware for sliding shutters and furniture hardware. And Swiss quality is still our leading principle to this day. Our products are manufactured in Switzerland's Mettmenstetten, despite an export ratio of more than 80%. This is not least because our philosophy is based on typical Swiss values such as precision, safety and reliability.

## About this brochure

Although they have been around since the 14th century, sliding shutters had fallen into obscurity for many years. But now they are back. Today, architects and building owners appreciate them not only as protective elements against sun, noise and prying eyes; they even use them as stylish facade design elements. Modern sliding shutters can turn even the most drab facade into a real eye-catcher: whether wood, plastic or metal, single or multiple leaves, with a Venetian blind effect or a solid fill. The brochure in hand should be a source of information and, more importantly, inspiration for the fascinating topic of sliding shutters. Please do not hesitate to contact Hawa AG directly for more detailed and specific information.

**Sliding** from page 4  
**Folding** from page 10  
**Stacking** page 13





# Contents



## **Page 4/5**

HAWA-Frontslide 60/100/140/matic



## **Page 6/7**

HAWA-Frontslide 60/100/140/A



## **Page 8/9**

HAWA-Frontslide 60/B



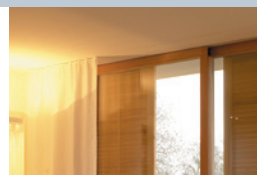
## **Page 10/11**

HAWA-Frontego 30/matic



## **Page 12**

HAWA-Frontfold 20



## **Page 13**

HAWA-Aperto 60/H



## **Page 14**

Reference installations

For automatic metal or wooden sliding shutters

# HAWA -Frontslide 60/100/140/matic

## Key specifications

### Shutter weight

60, 100 or 140 kg  
(132 lbs., 220 lbs. or 308 lbs.)

### Design variants:

HAWA-Frontslide 60/matic

HAWA-Frontslide  
60/matic-Symmetric

HAWA-Frontslide  
60/matic-Telescopic

HAWA-Frontslide 100/matic

HAWA-Frontslide  
100/matic-Symmetric

HAWA-Frontslide  
100/matic-Telescopic

HAWA-Frontslide 140/matic

HAWA-Frontslide  
140/matic-Symmetric

HAWA-Frontslide  
140/matic-Telescopic

For more information, please  
visit the HAWA-Productfinder  
[www.hawa.ch](http://www.hawa.ch)



## The principle

Can you increase the convenience offered by sliding shutters? You can:

with the HAWA-Frontslide 60/100/140/matic and its future-oriented drive unit with integrated control. Move your sliding shutters smoothly and quietly into any position at the touch of a button. The intelligent control allows for slow acceleration and braking movements. It also detects the exact position of the sliding shutter by counting and storing the number of motor revolutions.

By the way, the brushless motor and its high-quality gearbox are endurance artists par excellence. It follows the same orderly course without breakdown or maintenance and even helps to conserve energy. This is because automation makes shutters moveable without first opening the window. Thus, heat stays out during the summer but stays in during the winter.

## The benefits

- System from a single cast with high-quality components for full compatibility and a long life.
- Moves two or more telescopic or two symmetrical shutters with just one motor.
- Wall and ceiling installation and various bottom guide systems for any building situation.
- Controlled using commercially available blind controls: uniform operating element design.
- Installations can be connected to building automation systems.
- High degree of safety: the drive stops when the shutter encounters an obstacle.
- Efficient drive unit with a brushless motor and integrated intelligent control.
- Easy to plan and install. No need for special connection cables and external control systems.



Symmetrical solutions  
for twin-panel installations.



Telescopic solutions  
for twin and multi-panel installations.



#### Technical drive unit details

The integrated control is activated by commercially available roller blind switches.

Optional connection to facility management.

Operating voltage 100–240 VAC

50–60 Hz

Protection class IP 54

**CE tested**



Convenience can be this elegant:  
HAWA-Frontslide 60/matic.

For manually operated metal or wooden sliding shutters

## HAWA -Frontslide 60/100/140/A



Light and shade according to individual taste.

### **The principle**

To make the most of the exciting functional and design possibilities offered by contemporary sliding shutters, the solution has to be HAWA-Frontslide 60/100/140/A. There are so many convincing reasons for choosing this system: flexibility, high load-bearing capability, and Hawa's characteristically light, low-noise running and rattle-proof guides. Single and telescopic or symmetrically arranged shutters all slide with the greatest of ease. Then there is the installation time and expense saved by no less than three assembly options.





Guides are available for any shutter arrangement.



#### Key specifications

60, 100 or 140 kg  
(132 lbs., 220 lbs. or 308 lbs.)

#### Design variants:

HAWA-Frontslide 60/A

HAWA-Frontslide 60/A-Symmetric

HAWA-Frontslide 60/A-Telescopic

HAWA-Frontslide 100/A

HAWA-Frontslide 100/A-Symmetric

HAWA-Frontslide 100/A-Telescopic

HAWA-Frontslide 140/A

HAWA-Frontslide 140/A-Symmetric

HAWA-Frontslide 140/A-Telescopic

For more information, please  
visit the HAWA-Productfinder  
[www.hawa.ch](http://www.hawa.ch)



#### The benefits

- Extreme ease of assembly thanks to wall, ceiling and lintel fixing options.
- Easy opening and closing in any weather, no need to lean out.
- Specially developed for outdoor use, with very high resistance to corrosion.
- Moves single, telescopic or symmetrically arranged shutters.
- Functional parts disappear behind aesthetic clip-on covers.
- Choice of bottom guides available for any shutter arrangement.
- Straightforward manual operation.
- External tests certify the highest wind resistance (Class 6).
- Various Hawa locking options prevent shutters from opening by themselves and afford increased protection against break-ins.



Telescopic solutions  
for twin and multi-panel installations.



Symmetrical solutions  
for twin-panel installations.

For manually operated metal or wooden sliding shutters  
with minimal installation height

## HAWA - Frontslide 60/B

Modest space requirements  
and minimal installation height.





#### Key specifications

Max. shutter weight	60 kg (132 lbs.)
Min. shutter width	400 mm (1'3 $\frac{3}{4}$ " )
Shutter thickness	28–40 mm (1 $\frac{1}{8}$ " –1 $\frac{19}{32}$ " )

#### The principle

Design opportunities for extensive façades, modest space requirements, variable screening and shading – the case for sliding shutters is also the case for HAWA-Frontslide 60/B. But that is not the end of the story: this manually operated sliding masterpiece also features a patented suspension, for minimal installation height coupled with maximum efficiency of assembly. Shutter fitting, removal and height adjustment are all easily accomplished from inside the room. And thanks to the clever suspension and practically invisible wall fixing via angled profile, covers are unnecessary for a neatly finished installation.

#### The benefits

- Minimal installation height thanks to patented suspension cups.
- Maximum ease of assembly – fitting, removal and adjustment are all accomplished from inside the building.
- Simple wall and ceiling fitting with no need for covers.
- Very high corrosion resistance.
- Gentle, quiet running and straightforward manual operation.
- Choice of bottom guides for any shutter arrangement.
- Various Hawa locking options prevent shutters opening by themselves and afford increased protection against break-ins.



Adjustable screening and shade for expansive façade designs.



Convenient folding sliding shutters are very flexible

## HAWA-Frontego 30/matic

### **The principle**

HAWA-Frontego 30/matic is the multi-talent among modern sliding shutters. It folds and slides installations with up to 6 leaves weighing up to 30 kg each at the touch of a button: thanks to its innovative electric motor with a brushless drive system that guarantees gentle starts, stops and smooth movement with low energy consumption. Its resistance to the elements is second to none: neither wind nor weather can upset its smooth running properties even when the folding packets are open; acid rain, road salt and other corrosion factors are of no consequence and it fulfils the relevant DIN standards so well that one can unconditionally recommend it for use in coastal areas. It is nearly unfair that it combines all these qualities with exceptional good looks: the drive and control units are invisibly integrated and the elegance of its flush front makes it the perfect finish for any facade.



Fascinating interaction between light and surface.  
And folding sliding shutters that are locked in every  
position: HAWA-Frontego 30/matic.



All is flush: an impressively consistent front.

### The benefits

- High resistance to wind loads (certified for Class 6, tested for Class 8), durability (20,000 cycles, tested for Class 3).
- The hardware system for automatic folding sliding shutters is approved for applications up to Protection Class 3 of VFF pamphlet KB.01.
- Suitable for coastal areas thanks to high corrosion resistance; materials and coatings tested during a 1,000-hour salt spray test as per DIN EN 9227.
- Folding sliding shutters form a flush front when closed.
- Designs: 2, 4 or 6-panels, left or right hand, symmetrical and asymmetrical designs freely combinable.
- Screened areas of up to 12 m<sup>2</sup> for 6-panel installations with a shutter height of 3200 mm/ shutter width of 600 mm..
- Folding sliding shutters can be locked top and bottom in any position.
- Developed in accordance with DIN EN 13659.



The picturesque way of bringing movement to your facade:  
HAWA-Frontego 30/matic.

### Technical Specifications

Max. shutter weight	30 kg (66 lbs.)
Shutter width	300–600 mm (11 <sup>13</sup> / <sub>16</sub> "–1'11 <sup>5</sup> / <sub>8</sub> ")
Shutter height	700–3200 mm (2'3 <sup>9</sup> / <sub>16</sub> "–10'6")
Shutter thickness	28–32 mm (1 <sup>1</sup> / <sub>8</sub> "–1 <sup>9</sup> / <sub>32</sub> ")
Designs	2/4/6 panels
Power supply	100 VAC to 240 VAC 50/60 Hz
Protection class	IP54
Average speed Ø	55 mm/s
Operating temp.	–20°C to 60°C
Power cons. in standby mode	< 5 W
CE tested	





For space-saving folding/sliding window shutters

# HAWA -Frontfold 20

## The principle

There is sliding hardware. There is folding hardware. And then there is HAWA-Frontfold 20 which does both. Shutters based on this versatile and accomplished Hawa product fold together and park sideways at 90° to the window frontage. They can be fitted in front of windows or to an exterior balcony, with the shutters folding inwards or outwards accordingly. And not only can the folded panels be slid sideways to the wall, they also serve as windbreaks or screens. On the subject of screening: that will be unnecessary for neighbourly coexistence. With the design possibilities offered by HAWA-Frontfold 20, everyone will want to see them on show.



The perfect complement for ultra-modern architecture.



## Key specifications

Max. panel weight	20 kg (44 lbs.)
Max. panel width	600 mm (1'11 <sup>5</sup> / <sub>8</sub> ")
Panel thickness: wood	28–36 mm (1 <sup>1</sup> / <sub>8</sub> " – 1 <sup>7</sup> / <sub>16</sub> ")
Panel thickness: aluminium	28–32 mm (1 <sup>1</sup> / <sub>8</sub> " – 1 <sup>9</sup> / <sub>32</sub> ")

## The benefits

- Space-saving, flexible and easy to install.
- Characteristic Hawa sliding and folding ease.
- Robust construction using corrosion-resistant materials.
- Folding sliding shutters may be fitted in front of windows or to an exterior balcony.
- Folding panels attach with pivot bearings on one side.
- Installations are possible with any odd or even number of panels.
- Simple locking with patented Hawa pull catch.

For bespoke solutions like stackable wooden sliding shutters

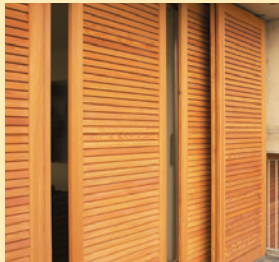
# HAWA - Aperto 60/H

## The principle

However pleasing sliding shutters may be, there are still situations where it is beneficial to have less on show. Just the job for HAWA-Aperto 60/H: it provides flush coverage for large windows, and stacks away elegantly and simply. Stacked parallel to the building façade, wind cannot gain purchase. To economise on space, shutters can also be parked at 90° to the sliding axis, tucked away in a balcony corner for example. With its vast flexibility, HAWA-Aperto 60/H is the ideal choice for custom plans and bespoke solutions. Just ask, and we will be happy to help your design take shape.



Elegant and simple stacking.



### Technical specifications

Max. panel weight	60 kg (132 lbs.)
Panel thickness	35 – 50 mm (1 <sup>3</sup> / <sub>8</sub> " – 1 <sup>31</sup> / <sub>32</sub> ")
Min. panel width	550 mm (1'9 <sup>21</sup> / <sub>32</sub> " )
Max. panel width (90°)	950 mm (3'1 <sup>13</sup> / <sub>32</sub> " )
Max. panel width (parallel)	1500 mm (4'11 <sup>1</sup> / <sub>16</sub> " )
Max. panel height	2600 mm (8'6 <sup>3</sup> / <sub>8</sub> " )
Height adjustable	± 3 mm ( <sup>1</sup> / <sub>8</sub> " )

### The benefits

- The first system on the market for parallel or 90° stacking wooden sliding shutters.
- Provides shade for even the broadest window frontages.
- Flexible, individual and durable design using corrosion-resistant materials.
- Installations present a flush front when closed.
- Excellent running characteristics.
- Shutters can be moved individually and positioned anywhere.

# Reference installations

The saying «A picture says more than a thousand words» may not always hold true. Nonetheless, having provided you with some detailed information on our sliding shutter solutions, we would like to let a few pictures speak for themselves. You can see just how well architectural highlights and sliding shutters fit together with Hawa hardware. And nothing would please us more than to one day be able to include your project in our list of references.



Apartment house, Zurich, Switzerland.



Children's day-care centre, Vienna, Austria.



Casa Alberto, Leuk, Switzerland.



Semidetached residence, Cham, Switzerland.



Akazienhof housing development, Zurich, Switzerland.



# Sliding, folding, stacking: Hawa has even more to offer.

## **Folding and sliding hardware for wooden applications**

Doors, walls, panel fronts – wood is the answer. Especially when you put them together using Hawa sliding hardware. We have an off-the-shelf solution for virtually every application, whether you want especially light-action sliding doors, room dividers, or sliding walls that park away in the furthest corner of an apartment.



## **Hardware for furniture**

From a simple office cabinet to a generously dimensioned kitchen front, from cleverly designed mini-units to a walk-in dream solution for any room: furniture hardware from Hawa opens the door to a whole world of design options. Every piece of furniture hardware shares the same installer friendliness, excellent workmanship, flexibility in the choice of material and perfect sliding properties.



## **Folding and sliding hardware for glass/metal applications**

Aesthetics, lightness, transparency: glass makes it possible and Hawa has the right hardware solution for each of your designs. With discreetly integrated technology that does justice to the elegance of the material. Regardless whether you want to slide doors with ease, partition rooms with form and flexibility or automatically stack sliding walls away.

**Further information:**

Hawa Sliding Solutions AG  
8932 Mettmensstetten  
Switzerland  
Tel. +41 44 787 17 17  
Fax +41 44 787 17 18  
[www.hawa.com](http://www.hawa.com)

